

- 1: sensor 1
2: sensor 2
3: LED OUT 2
4: LED OUT 1



Made in Germany

Product characteristics

Inductive sensor	
Rectangular, plastics	
Terminals	
Dual sensor for actuator feedback	
Sensing range 4 mm; [nf] non-flush mountable	

Electrical data

Electrical design	DC PNP
Operating voltage [V]	10...30 DC *)
Current consumption [mA]	15; a maximum of one output is switched
Protection class	III
Reverse polarity protection	yes

Outputs

Output function	2 x normally open
Voltage drop [V]	< 2.5
Current rating [mA]	100
Short-circuit protection	pulsed
Overload protection	yes
Switching frequency [Hz]	500
Valve control	24 (< 20 W)

Range

Sensing range [mm]	4
Real sensing range (Sr) [mm]	4 ± 10 %
Operating distance [mm]	0...3.25

Accuracy / deviations

Correction factors	mild steel = 1 / stainless steel approx. 0.7 / brass approx. 0.5 / Al approx. 0.4 / Cu approx. 0.3
--------------------	--

Valve sensors

Hysteresis	[% of Sr]	1...15
Switch-point drift	[% of Sr]	-10...10

Environment

Ambient temperature	[°C]	-25...80
Protection		IP 67

Tests / approvals

EMC	EN 60947-5-2 EN 55011:	class B
MTTF	[Years]	1072

Mechanical data

Mounting		non-flush mountable
Housing materials		housing: PA (polyamide); screws: stainless steel; washer: stainless steel
Weight	[kg]	0.17

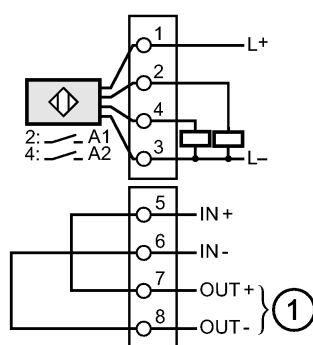
Displays / operating elements

Output status indication	LED	2 x yellow
--------------------------	-----	------------

Electrical connection

Connection		Terminal strip in the terminal chamber
------------	--	--

Wiring



1: solenoid valve

Accessories

Accessories (included)		2 washers; 2 cylinder head screw; M5 x 18
------------------------	--	---

Remarks

Remarks		*) to PELV
Pack quantity	[piece]	1

FLUXER

FLOOD CONTROL