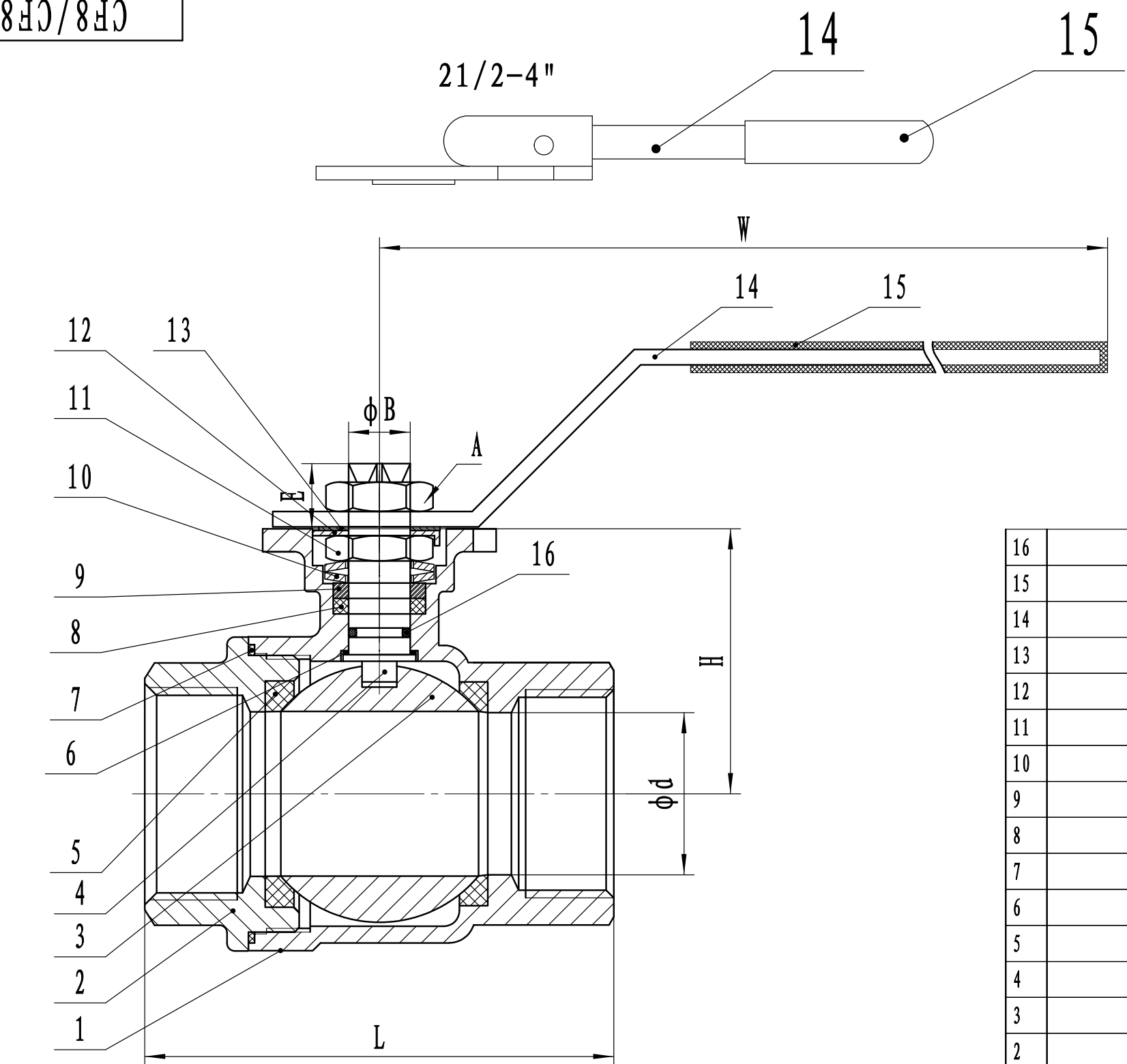
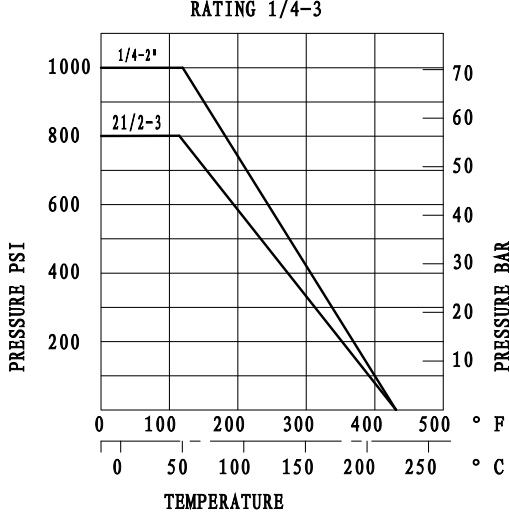
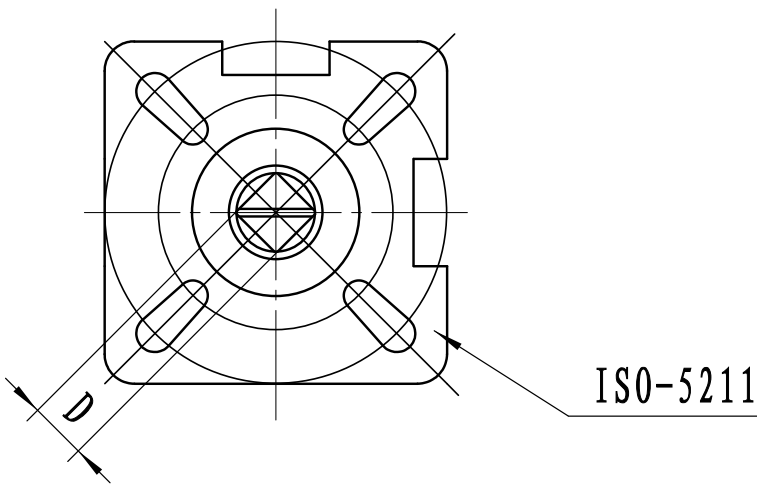


CF8/CF8M



	ϕd	L	H	D	E	B	W	ISO5211
1/4"	11.6	48	36.5	9	9	12	143	F04/03
3/8"	12.5	48	36.5	9	9	12	143	F04/03
1/2"	15	58	37.8	9	9	12	143	F04/03
3/4"	20	65	42.5	9	9	12	143	F04/03
1"	25	77	45	11	11	14	163	F05/04
1-1/4"	32	90	51.5	11	11	14	163	F05/04
1-1/2"	38	98	59.5	14	14	18	188	F07/05
2"	50	121	68.5	14	14	18	188	F07/05
2-1/2"	64	155.6	92	17	17	22	350	F10/07
3"	76	183	101	17	17	22	350	F10/07
4"	94	240	133	22	22	28	350	F12/10

16		O-RING		VITON			
15		PLASTIC COVER		PLASTIC			
14		HANDLE		304			
13		WASHER		304			
12		AGAINST PINE PAD		304			
11		STEM NUT		304			
10		SPRING WASHER		301			
9		GLAND RING		304			
8		STEM PACKING		PTFE			
7		BODY SEAL		PTFE			
6		THRUST WASHER		PTFE			
5		SEAT		PTFE			
4		STEM		316			
3		BALL		316			
2		CAP		CF8/CF8M			
1		BODY		CF8/CF8M			



2PC MOUNTING PAD

CF8/CF8M